

# CARNICOM INSTITUTE RESEARCH PROJECT

## 2014 SUBMISSION PROCEDURES FOR THE MORGELLONS RESEARCH PROJECT

*The Institute claims the exclusive right to publish all information, materials and photographs that are submitted to this organization and these materials will not be returned.*

**Criteria:** Individuals who would like to participate in this research project are requested to submit photographs of one (or all) of the three types of visual evidence of Morgellon's filament contamination in their bodies.

**Part 1 - Unique filaments within or on the body.** Please photograph any materials that appear to be of an unusual or unique filament nature coming out of your skin. Photographs must be of filaments directly on and/or protruding from the skin or body surface. Any images of materials removed or shed from the body will not be used for the project.

**Two sets of photographs must be taken for each affected area:**

- **Photograph #1** - The first providing an overall view of the affected area on the body, including the normal looking skin around the affected area.
- **Photograph #2** - The second photograph is to be a close-up of this same area.

The photographic images need to be taken with good lighting and in focus. The second set of photographs should be taken as close as possible to the filaments. *Please restrict the file size of photographs to approximately 1 MB.*

### Sample Filament Photograph Images:



Source:

<http://zazenlife.com/2012/01/27/morgellons-disease-delusion/>



Source:

<http://www.morgellons-disease-research.com/morgellons-disease/>

**Part 2 - Skin lesions that resist healing.** Please photograph any lesions, with or without filaments sticking out of them. Any photographs must be directly of the skin or body surface.

**Two sets of photographs must be taken for each affected area:**

- **Photograph #1** - The first providing an overall view of the affected area on the body, including the normal looking skin around the affected area.
- **Photograph#2** - The second photograph is to be a close-up of this same area.

The photographic images need to be taken with good lighting and in focus. The second set of photographs should be taken as close as possible to the lesions. *Please restrict the file size of photographs to approximately 1 MB.*

**CARNICOM INSTITUTE RESEARCH PROJECT**  
**2014 SUBMISSION PROCEDURES FOR THE MORGELLONS RESEARCH PROJECT**

**Sample Skin Lesion Photographs:**



**Part 3 - Oral Filament Samples or “Gum Samples”:** The oral sample is produced with the use of red wine or pure purple grape juice. The gums are a gateway to the body. Sublingual medicines and supplements can be absorbed directly through the gums and substances in the bloodstream can be extruded out through the gums.

Acidic liquids can “pull” Morgellon’s filaments out through the gums. Morgellon’s filament samples can double their population in 24 hours when cultured in the laboratory in red wine. So, it is preferred to use red wine, but for those who prefer non-alcoholic liquids, organic grape juice can just as productive.

**Gum sampling method:**

- Brush your teeth and rinse your mouth completely.
- Without swallowing, take approximately one ounce of the wine or grape juice (optional: add a few drops of hydrogen peroxide) and hold it in your mouth.
- Swish it around for three minutes.
- Then spit the liquid into a white ceramic container or bowl.

**Repeat this process three times.** Spit the liquid into a single container to collect about three ounces.

- Pour the solution through a clean white coffee filter and discard the liquid.
- Upon completion, open the filter and photograph any materials that are present.

If Morgellon’s filaments are present, they are usually a deep purple in color and of a shiny filament nature.

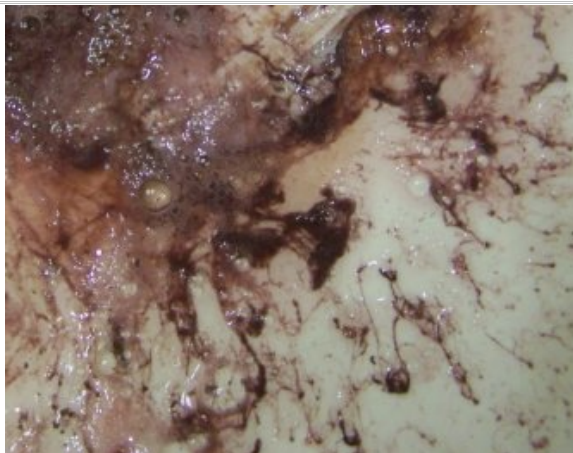
The photographic images need to be taken with good lighting, in focus, and taken as close as possible to the filter. The clarity of the photographs is an important criterion in the evaluation of information submitted for the project. *Please restrict the file size of photographs to approximately 1 MB.*

**Sample “Gum Pulling” Photographs:**

**CARNICOM INSTITUTE RESEARCH PROJECT**  
**2014 SUBMISSION PROCEDURES FOR THE MORGELLONS RESEARCH PROJECT**



Source: <http://www.carnicom.com/blood1.htm>



Source: Carnicom Institute : Internal library

**Image Submission:**

**Please send the images in .jpg format stored at less than 1 MB per photo to:**

**[info@carnicominstitute.org](mailto:info@carnicominstitute.org)**

- This ongoing study will be conducted in an anonymous and confidential manner for research purposes only.
- There will be no medical diagnosis or individual interpretation given. The study is for scientific purposes only and the knowledge obtained will be for the public benefit.
- Carnicom Institute deeply appreciates every participant but will not be able to respond directly.
- There are hundreds of specific research projects that need to be done now but cannot move forward without your help. If you believe in our work after reviewing the research we've completed to date, please, the time to donate is NOW.

**Carnicom Institute**

PO Box 23721

Santa Fe, NM 87502

[www.carnicominstitute.org](http://www.carnicominstitute.org)

[info@carnicominstitute.org](mailto:info@carnicominstitute.org)

505-629-1484 (voicemail)

**Disclaimer:** The Carnicom Institute is an educational and research organization. We serve the public welfare. We do not advocate any particular products, protocols, or therapies related to health or environmental safeguard. It is up to the audience to make an educated decision on how to use the information that is presented. Any presentation, opinion, or expression by any representative of the Carnicom Institute, or outside affiliation, in no way implies or denotes endorsement by the Institute. The Institute is not affiliated with any political or religious groups.